



CLUB

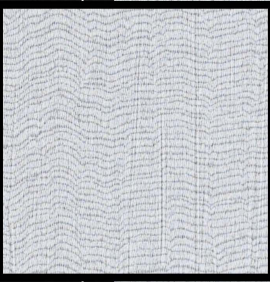
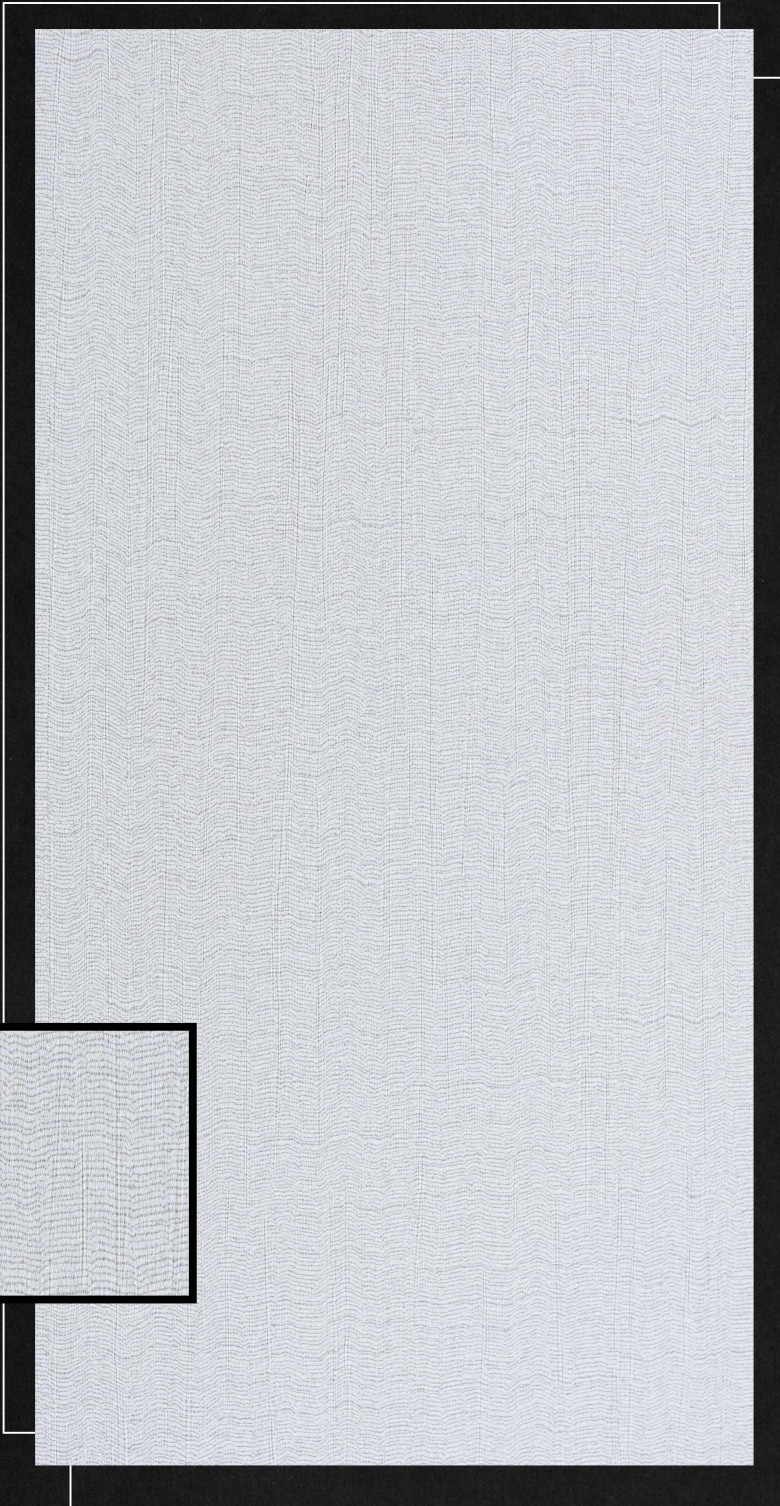
MATERIAL STUDIO

SIANNA

POLYMER LOUVERS & LAMINATE

DESIGN

MATERIAL : POLYMER LAMINATE



SIZE : 120MM X 8FT
THICKNESS : 15MM

1971

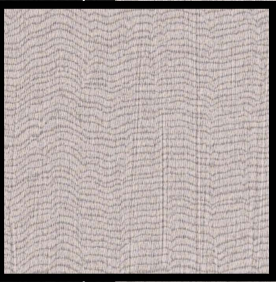
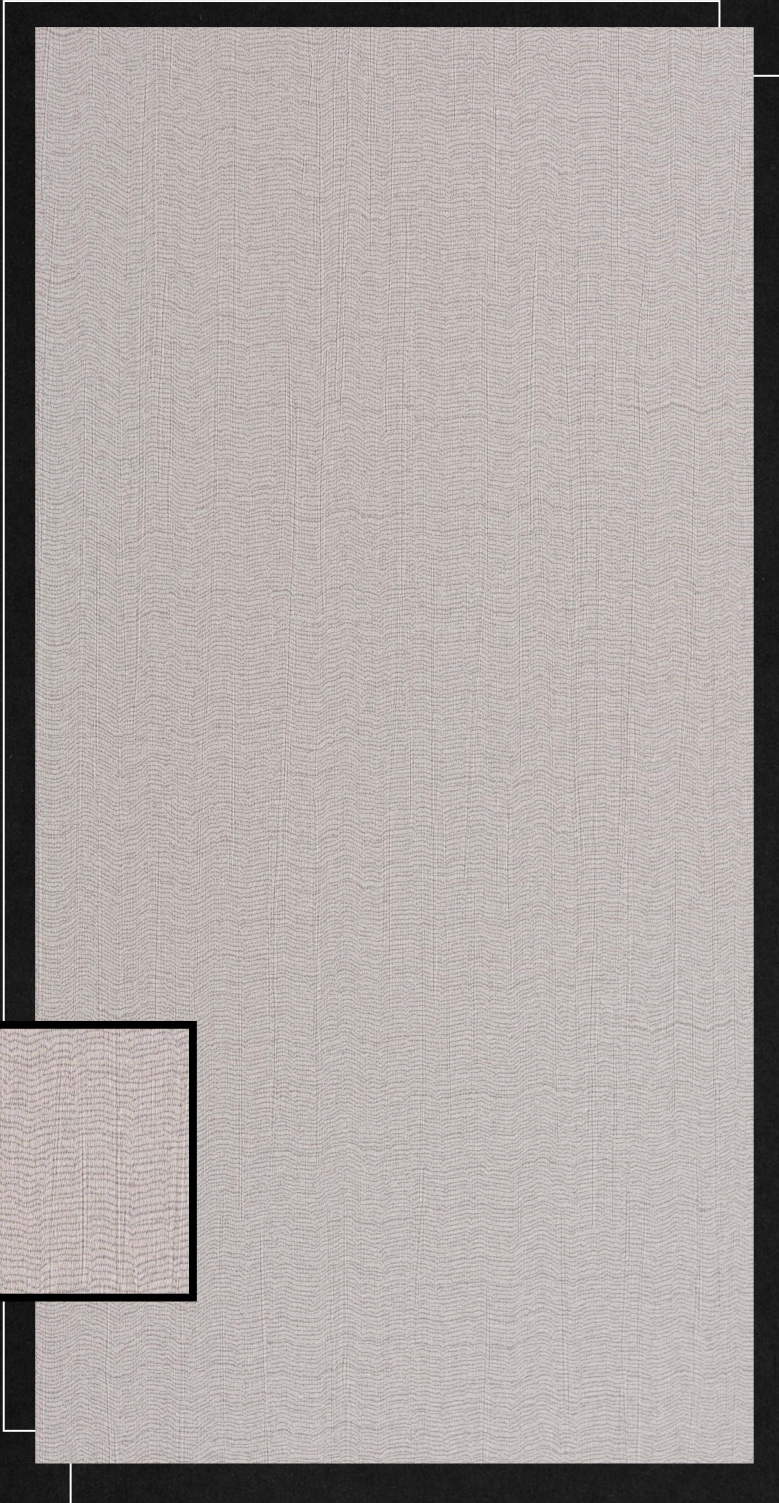
THICKNESS : 1.5MM
SIZE : 10 ' X 4' / 8' X 4'

4501

CREATIVE

DESIGN

MATERIAL : POLYMER LAMINATE



SIZE : 120MM X 8FT
THICKNESS : 15MM

1972

THICKNESS : 1.5MM
SIZE : 10 ' X 4' / 8' X 4'

4502

POLYMER



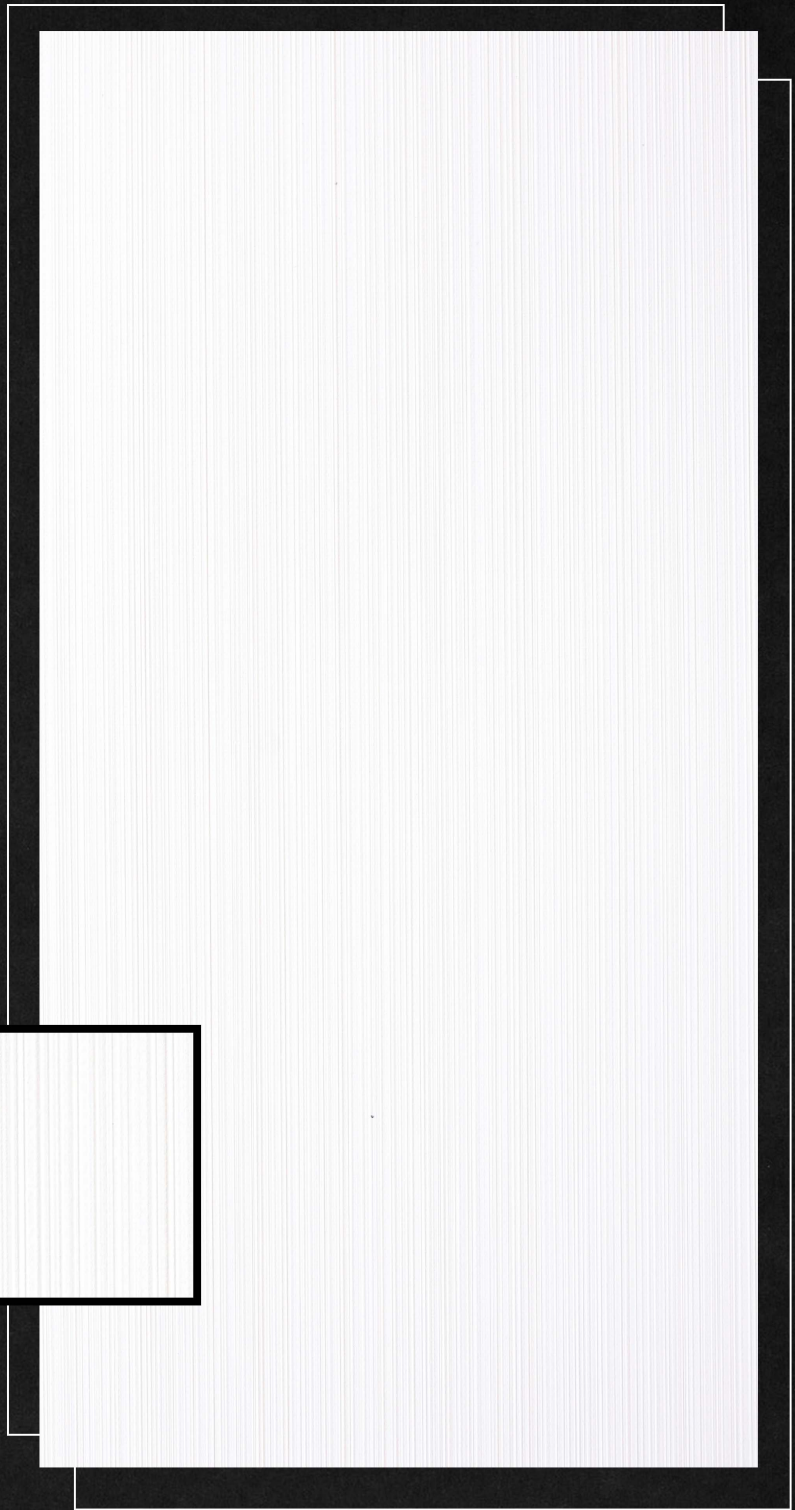
LOUVERS



SIZE : 120MM X 8FT
THICKNESS : 15MM

1973

MATERIAL : POLYMER LAMINATE



THICKNESS : 1.5MM

SIZE : 10 ' X 4' / 8' X 4'

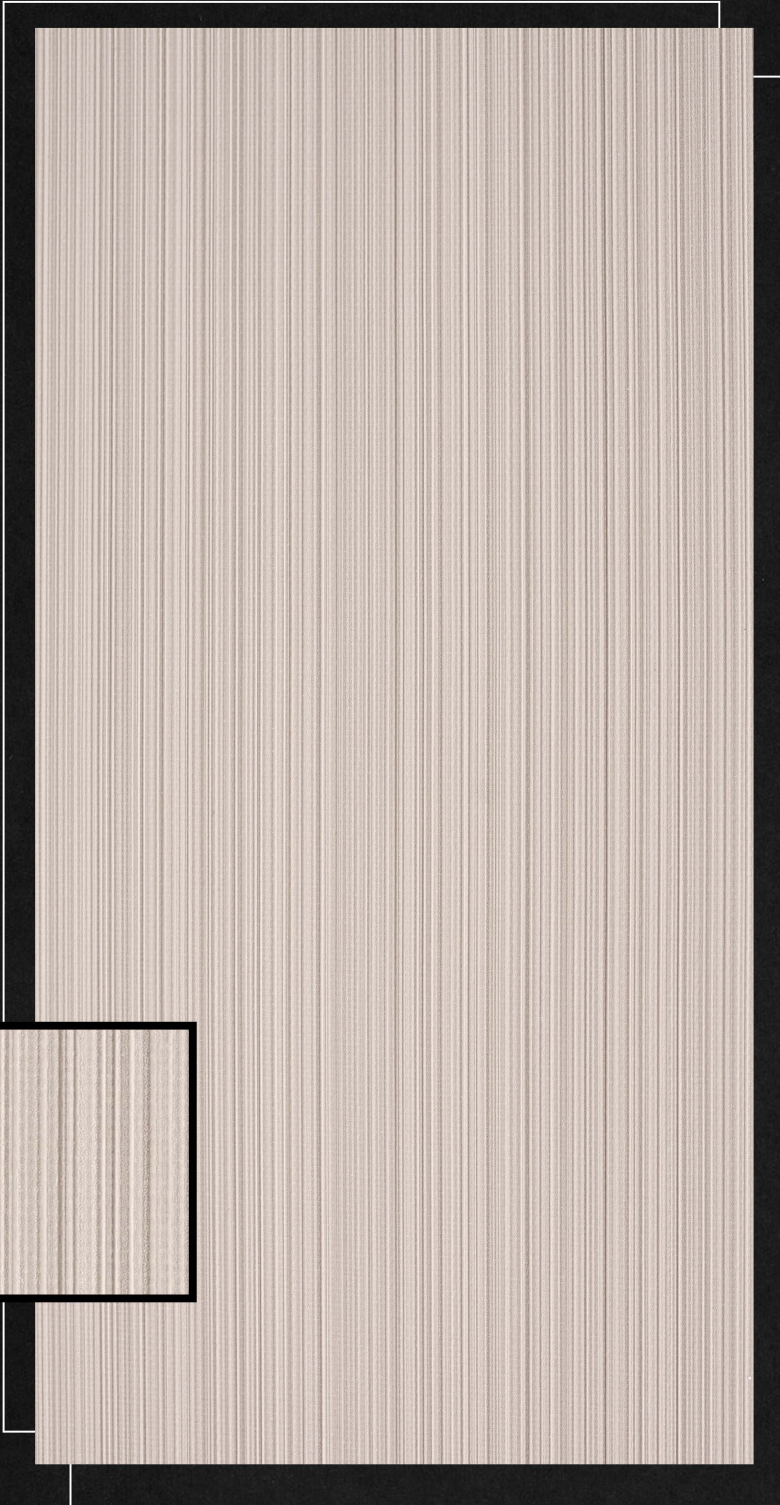
4503

LAMINATE



SIANNA

MATERIAL : POLYMER LAMINATE



SIZE : 120MM X 8FT
THICKNESS : 15MM

1974

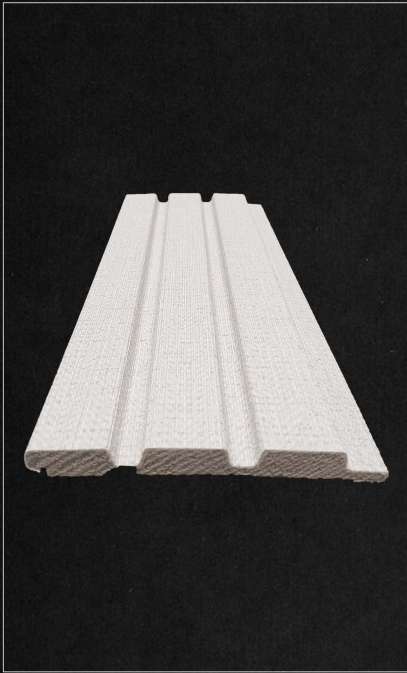
THICKNESS : 1.5MM
SIZE : 10 ' X 4' / 8' X 4'

4504

POLYMER

CLUB
MATERIAL STUDIO

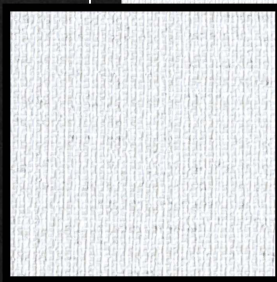
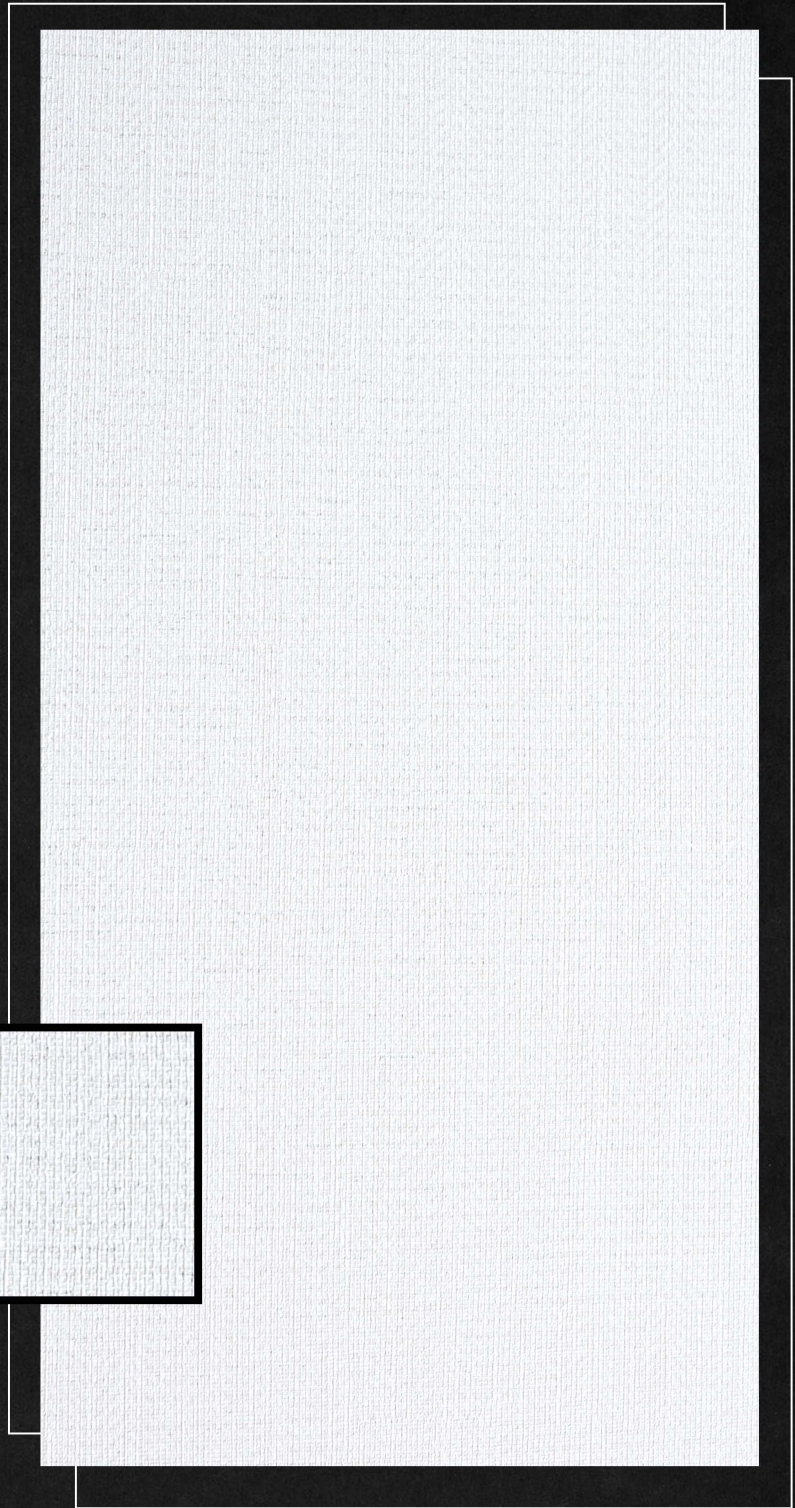




SIZE : 120MM X 8FT
THICKNESS : 15MM

1975

MATERIAL : POLYMER LAMINATE



THICKNESS : 1.5MM
SIZE : 10 ' X 4' / 8' X 4'

4505



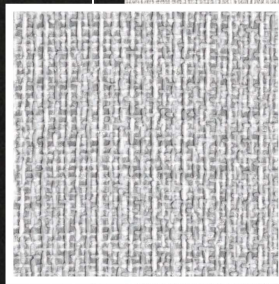
LOUVERS



SIZE : 120MM X 8FT
THICKNESS : 15MM

1976

MATERIAL : POLYMER LAMINATE



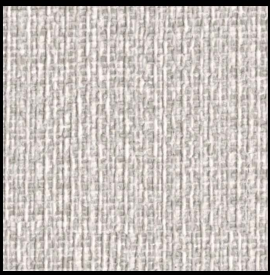
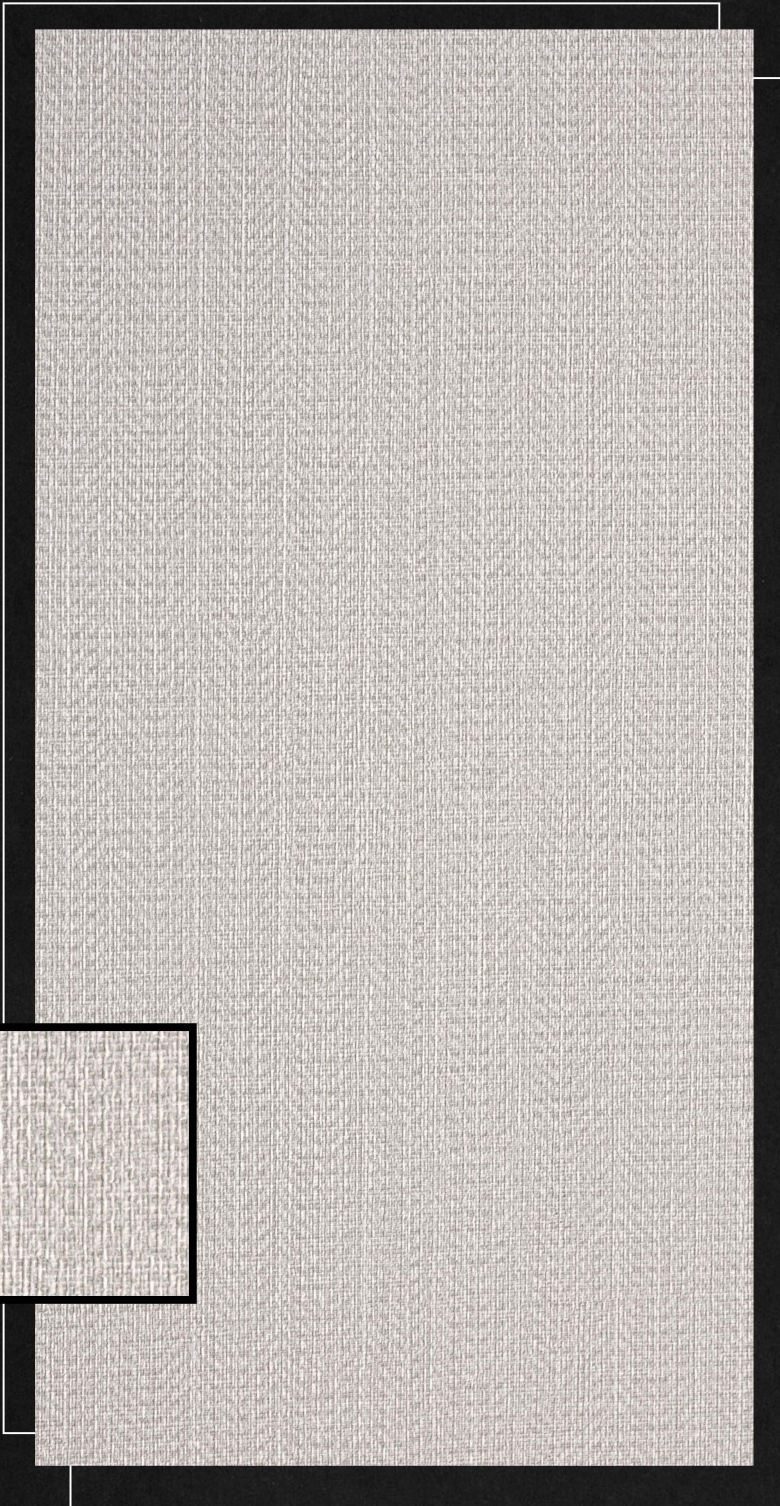
THICKNESS : 1.5MM
SIZE : 10 ' X 4' / 8' X 4'

4506

POLYMER



MATERIAL : POLYMER LAMINATE



SIZE : 120MM X 8FT
THICKNESS : 15MM

1977

THICKNESS : 1.5MM
SIZE : 10 ' X 4' / 8' X 4'

4507



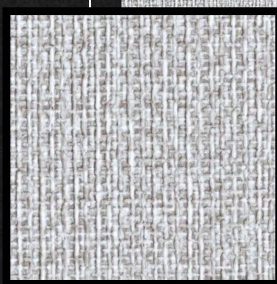
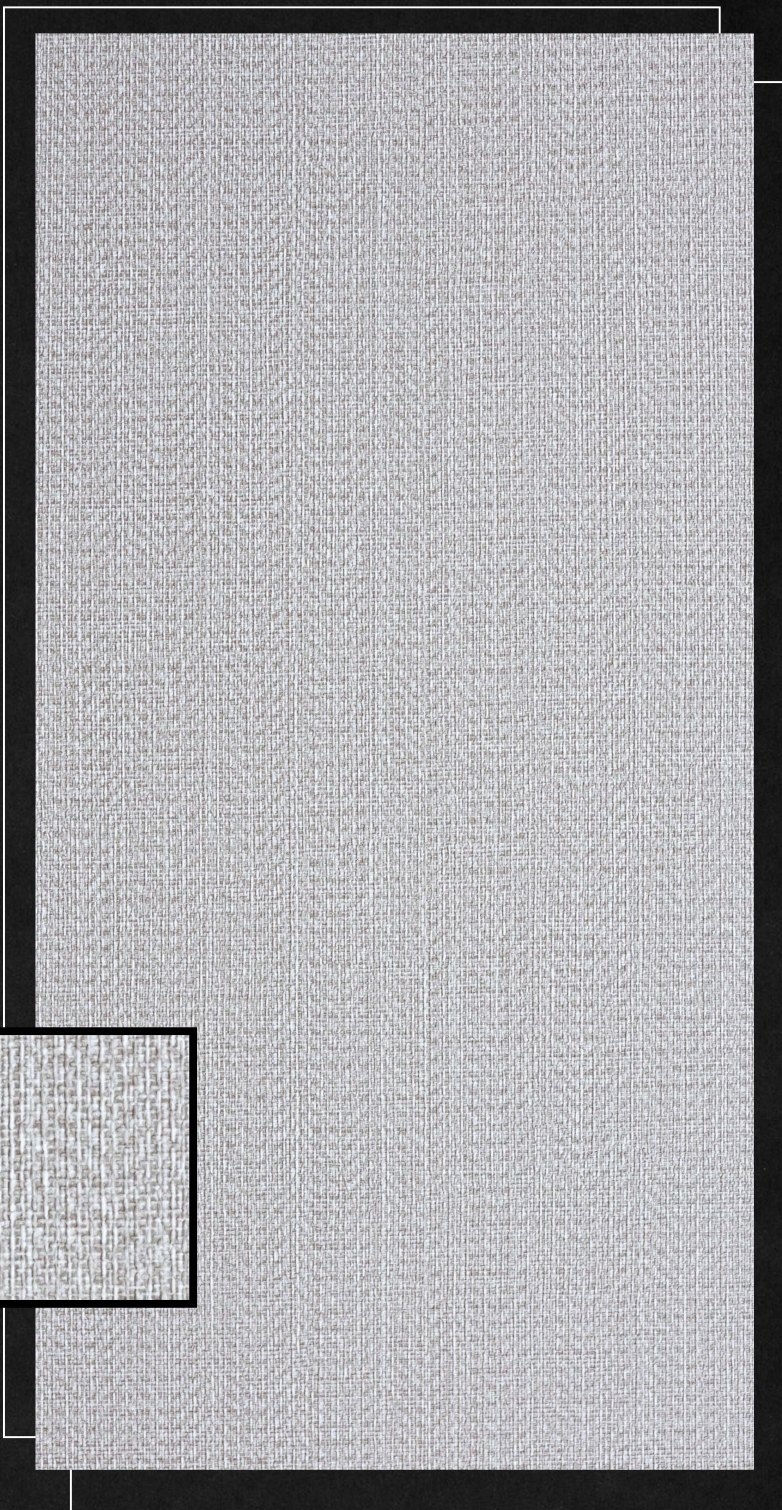
LOUVERS



SIZE : 120MM X 8FT
THICKNESS : 15MM

1978

MATERIAL : POLYMER LAMINATE



THICKNESS : 1.5MM
SIZE : 10 ' X 4' / 8' X 4'

4508

COLLECTION

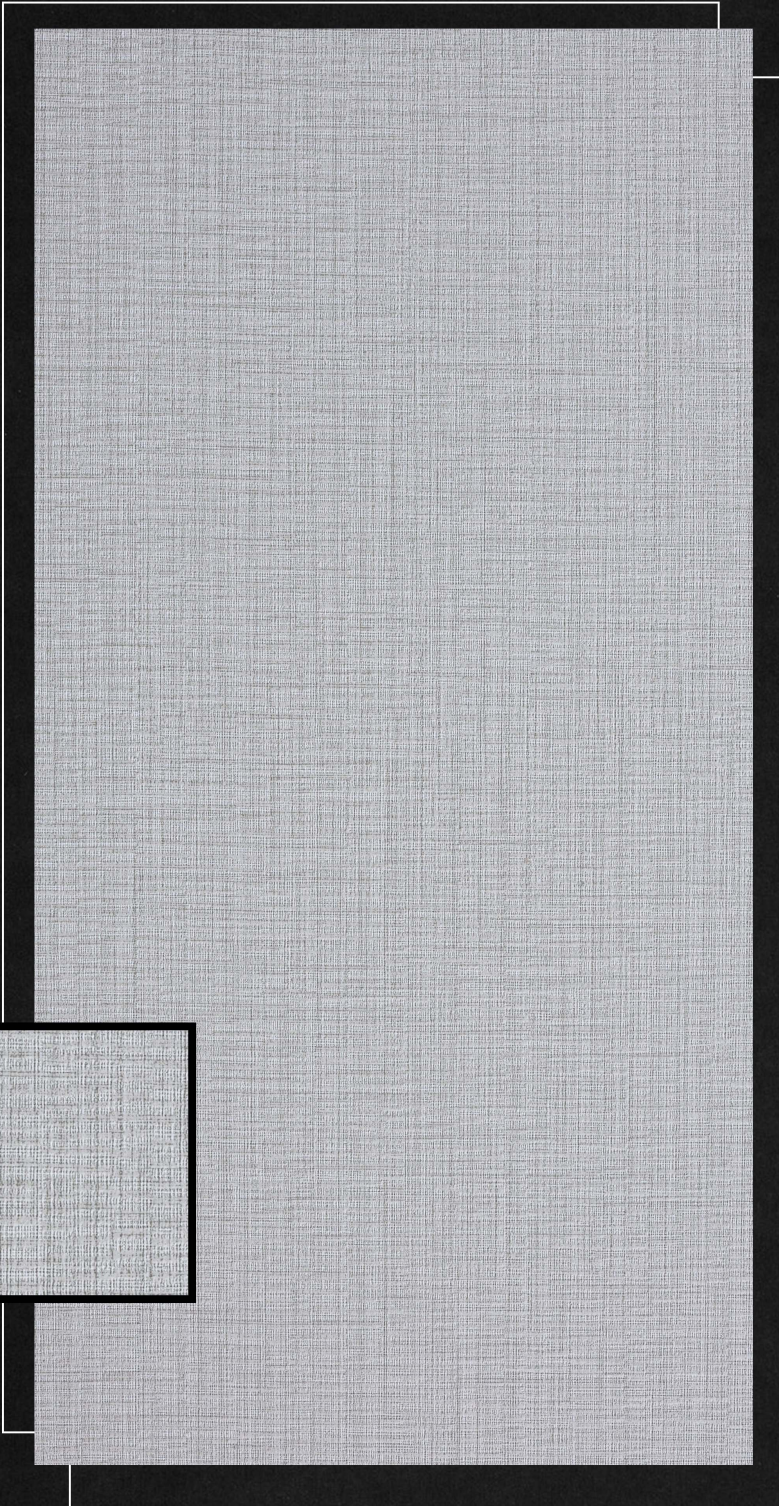


CLUB
MATERIAL STUDIO



DESIGN

MATERIAL : POLYMER LAMINATE



SIZE : 120MM X 8FT
THICKNESS : 15MM

1979

THICKNESS : 1.5MM
SIZE : 10 ' X 4' / 8' X 4'

4509

CREATIVE

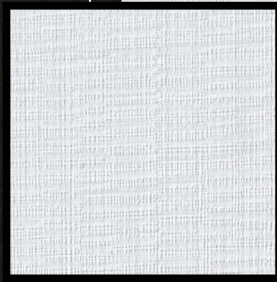
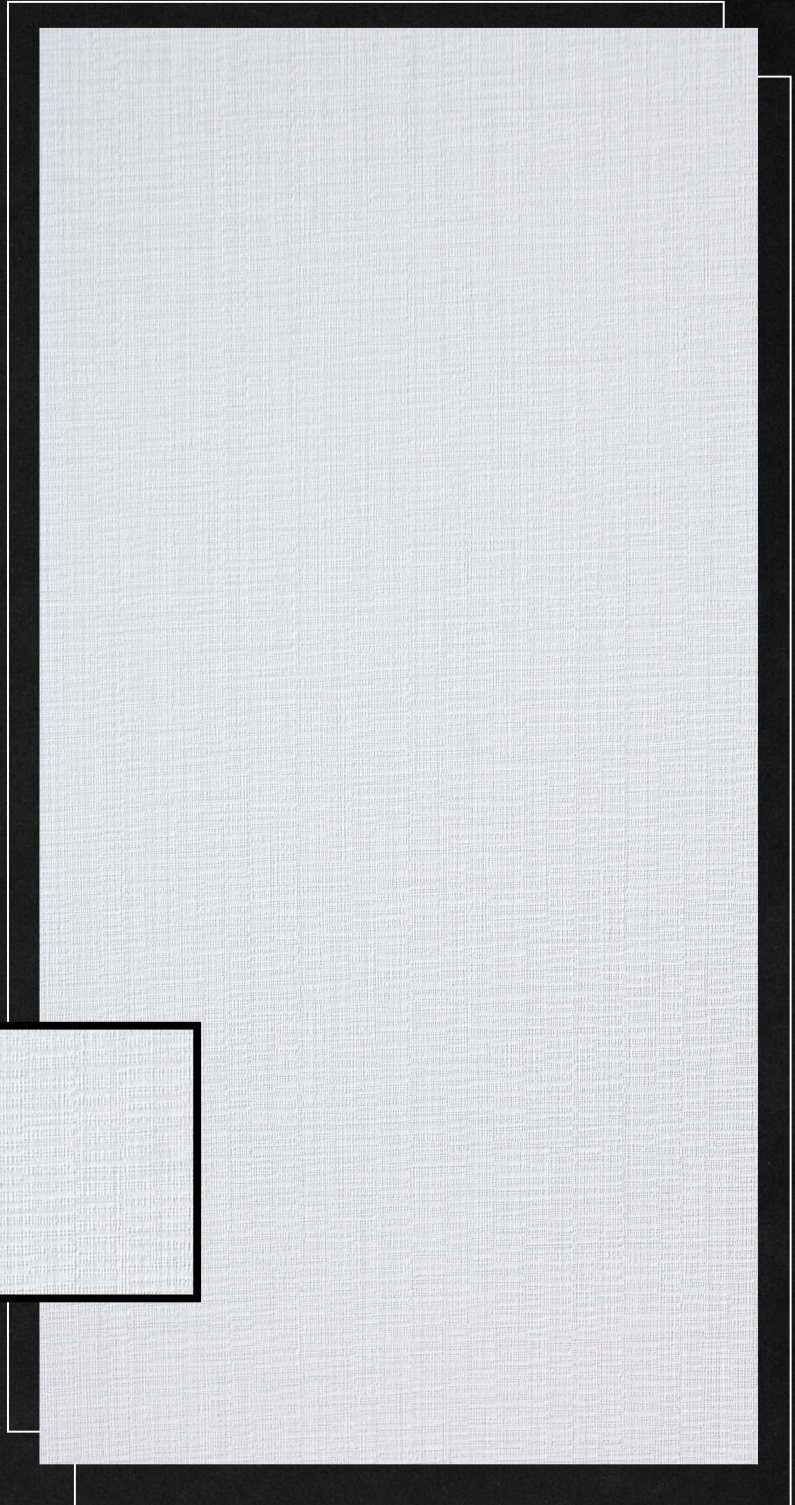
LOUVERS



SIZE : 120MM X 8FT
THICKNESS : 15MM

1980

MATERIAL : POLYMER LAMINATE



THICKNESS : 1.5MM
SIZE : 10 ' X 4' / 8' X 4'

4510

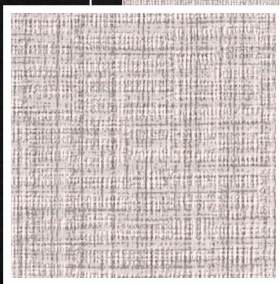
LAMINATE





LAMINATE

MATERIAL : POLYMER LAMINATE



SIZE : 120MM X 8FT
THICKNESS : 15MM

1981

THICKNESS : 1.5MM
SIZE : 10 ' X 4' / 8' X 4'

4511

POLYMER

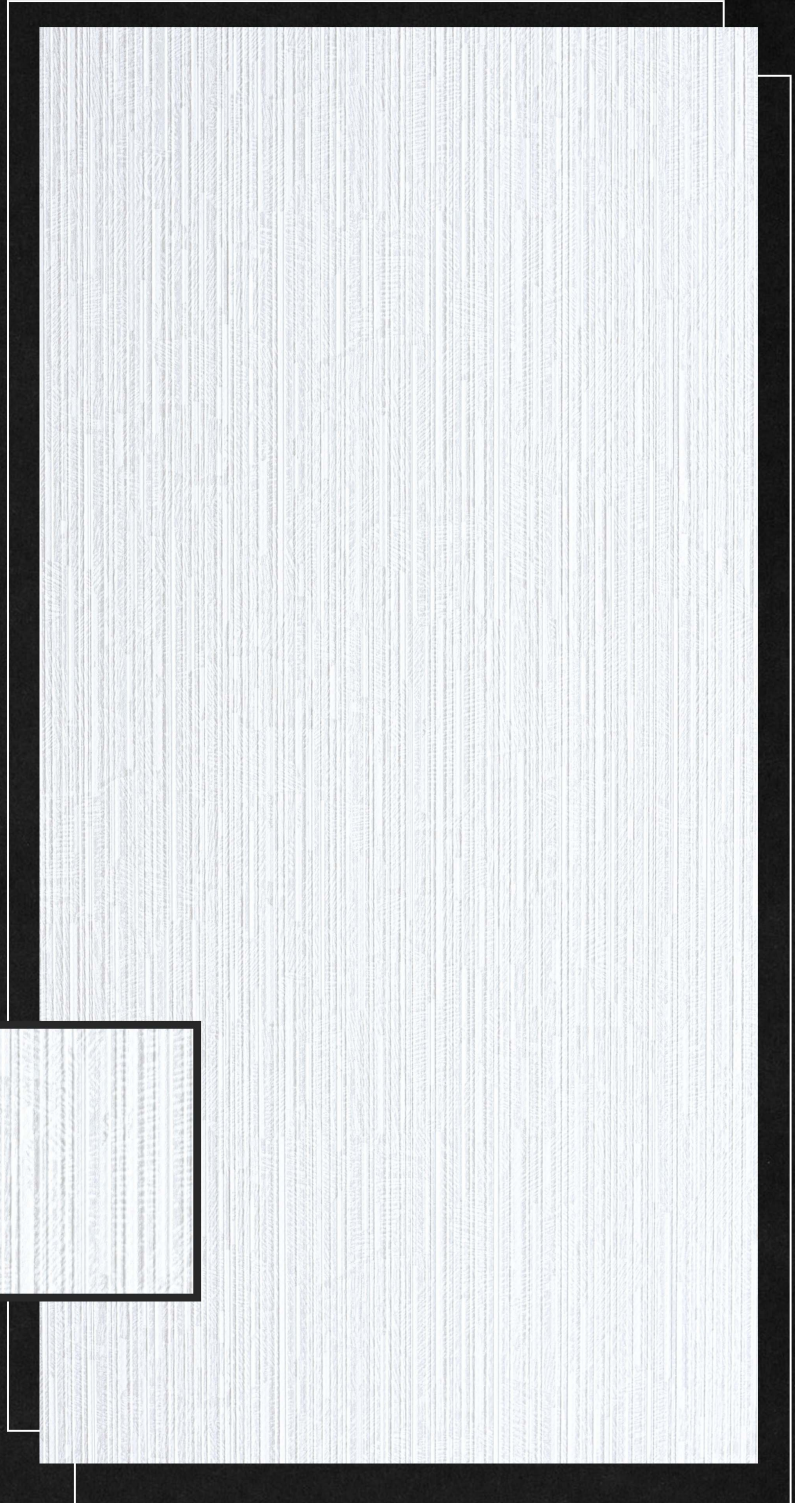
LOUVERS



SIZE : 120MM X 8FT
THICKNESS : 15MM

1982

MATERIAL : POLYMER LAMINATE



THICKNESS : 1.5MM
SIZE : 10 ' X 4' / 8' X 4'

4512

LAMINATE





LOUVERS



SIZE : 120MM X 8FT
THICKNESS : 15MM

1983

MATERIAL : POLYMER LAMINATE



THICKNESS : 1.5MM
SIZE : 10 ' X 4' / 8' X 4'

4513

LAMINATE

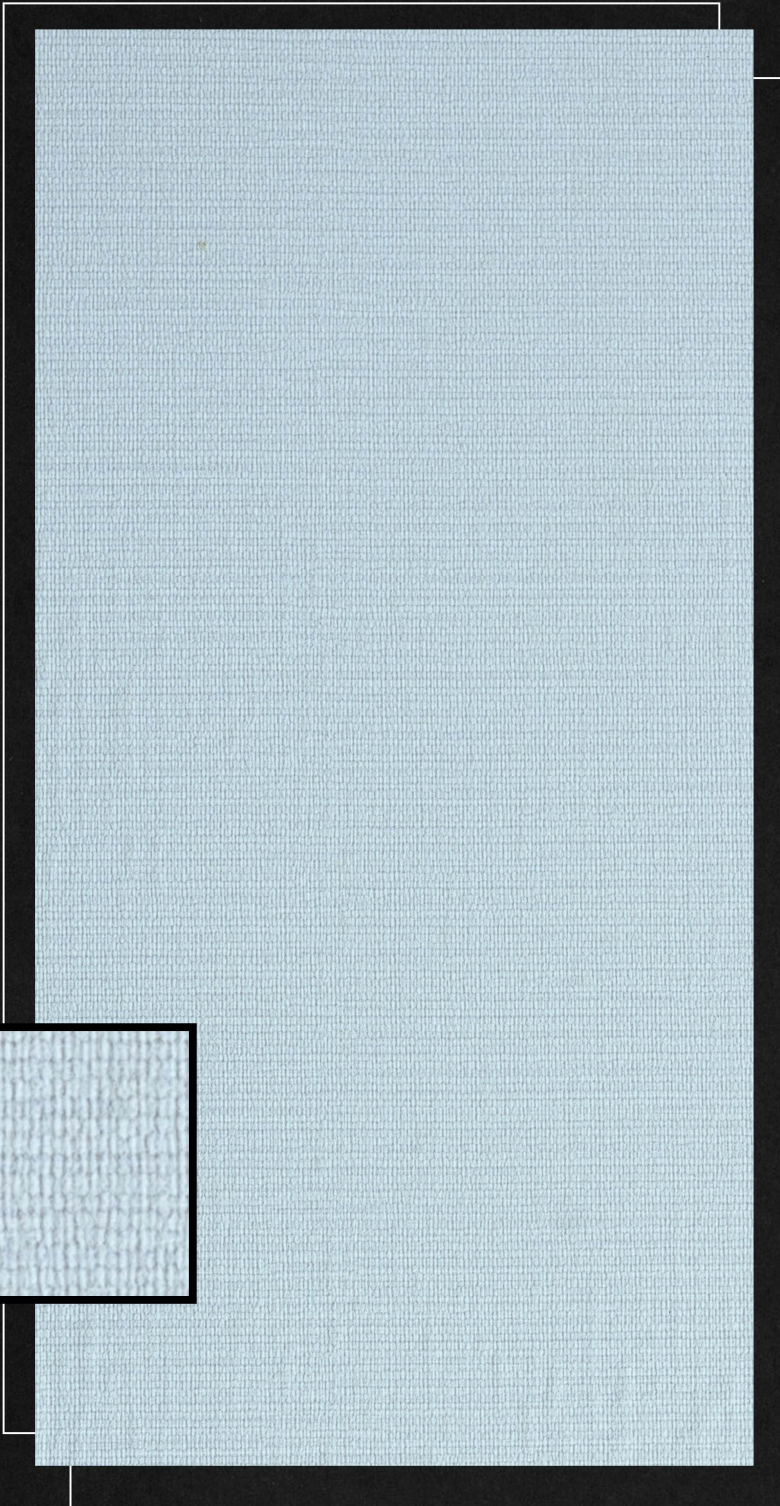


DESIGN

CLUB

MATERIAL STUDIO

MATERIAL : POLYMER LAMINATE



SIZE : 120MM X 8FT

THICKNESS : 15MM

1984

THICKNESS : 1.5MM

SIZE : 10 ' X 4' / 8' X 4'

4514

POLYMER

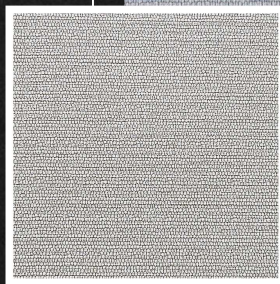
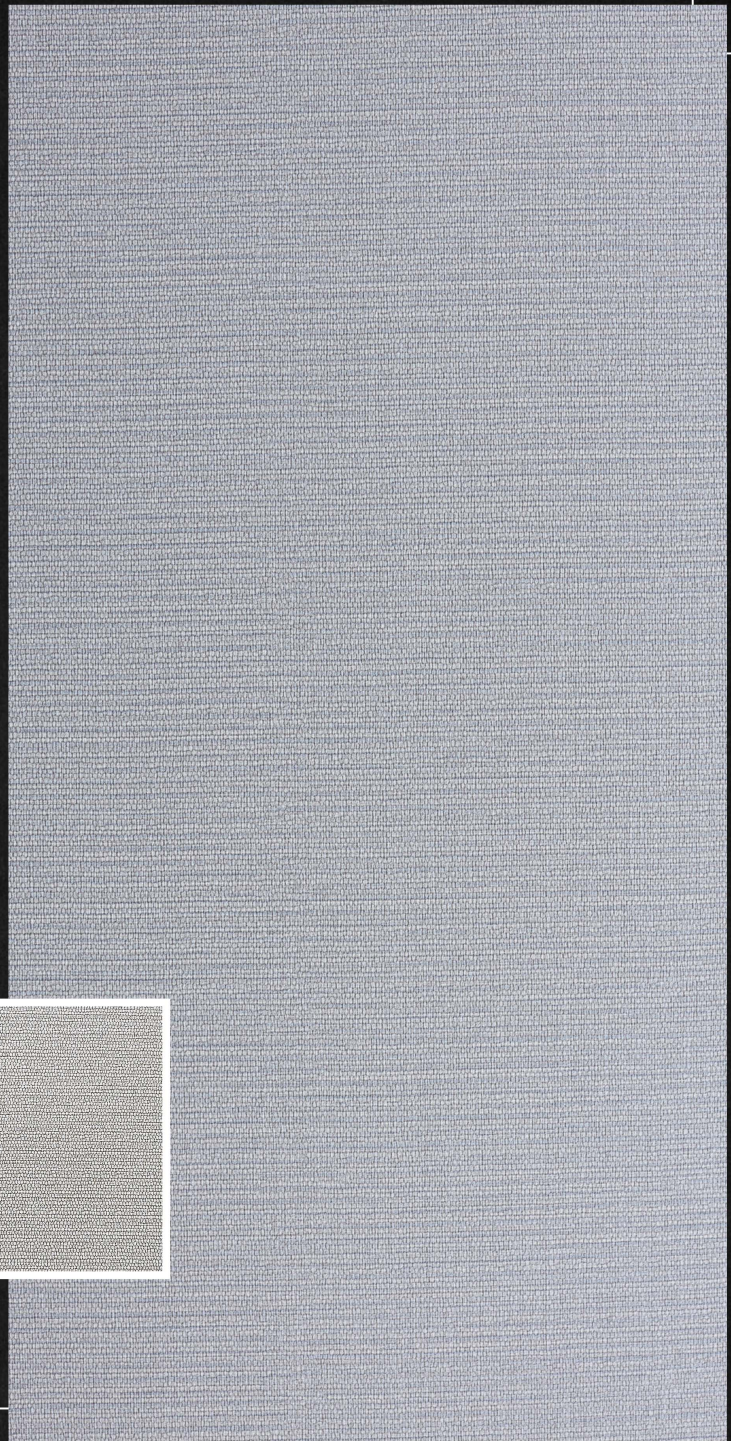
LOUVERS



SIZE : 120MM X 8FT
THICKNESS : 15MM

1985

MATERIAL : POLYMER LAMINATE



THICKNESS : 1.5MM
SIZE : 10 ' X 4' / 8' X 4'

4515

LAMINATE

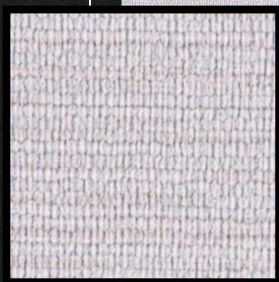




SIZE : 120MM X 8FT
THICKNESS : 15MM

1986

MATERIAL : POLYMER LAMINATE

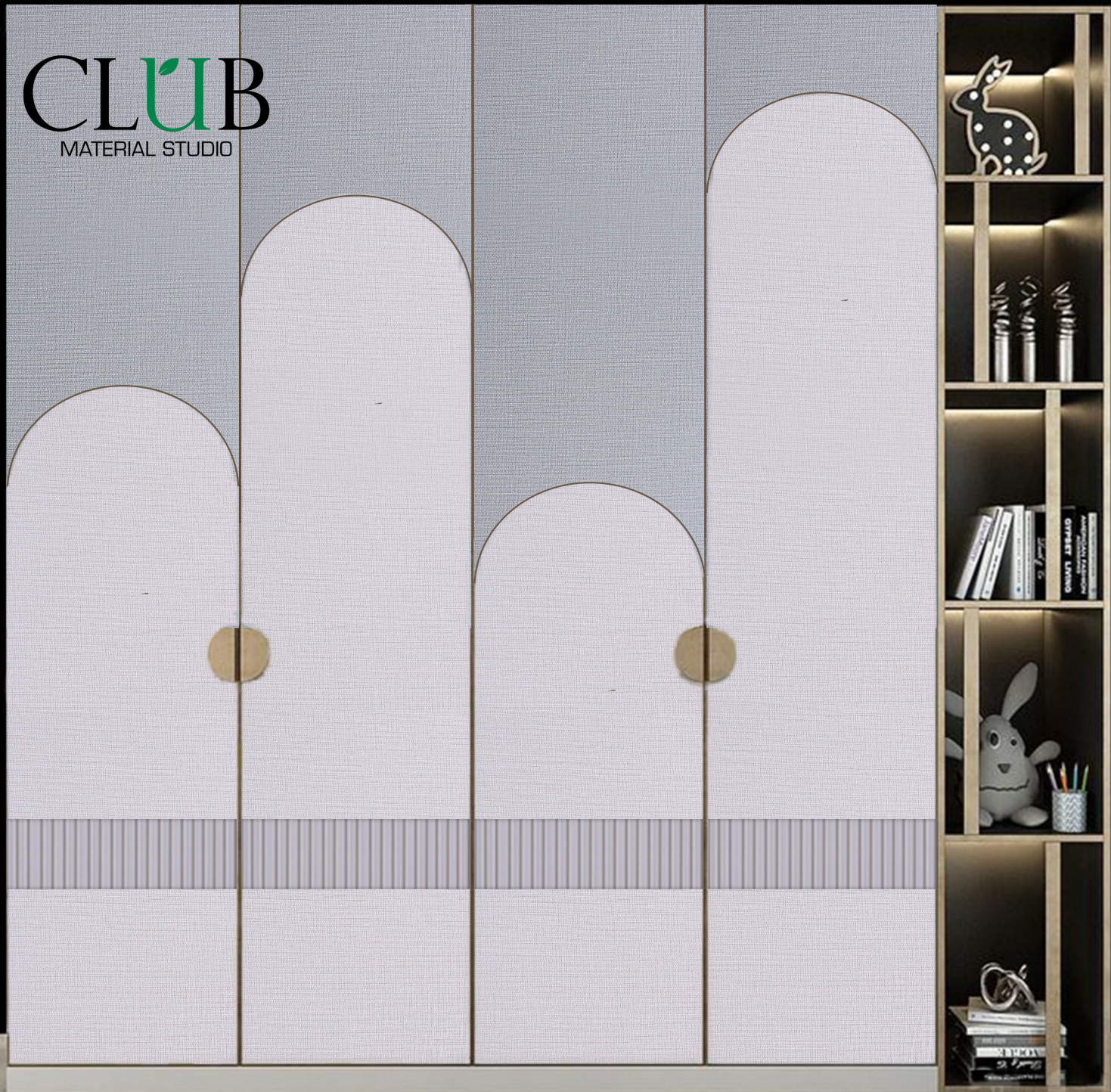


THICKNESS : 1.5MM
SIZE : 10 ' X 4' / 8' X 4'

4516



CLUB
MATERIAL STUDIO



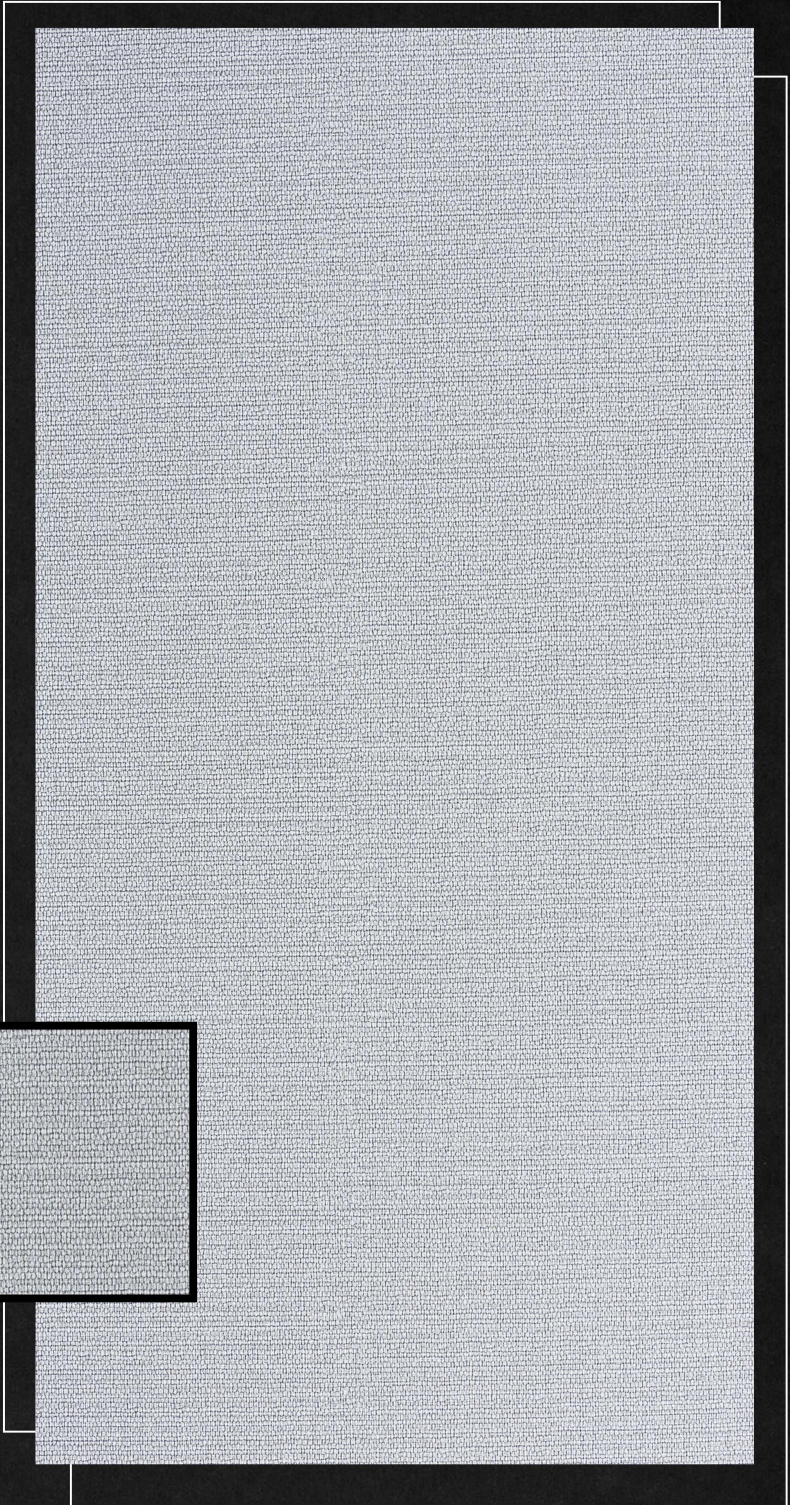
LOUVERS



SIZE : 120MM X 8FT
THICKNESS : 15MM

1987

MATERIAL : POLYMER LAMINATE



THICKNESS : 1.5MM
SIZE : 10 ' X 4' / 8' X 4'

4517

LAMINATE



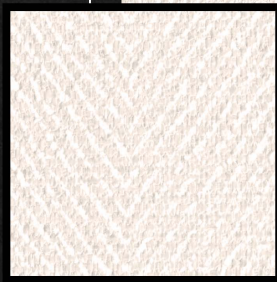
LOUVERS



SIZE : 120MM X 8FT
THICKNESS : 15MM

1988

MATERIAL : POLYMER LAMINATE



THICKNESS : 1.5MM
SIZE : 10 ' X 4' / 8' X 4'

4518

SIANNA



LAMINATAE

CLUB
MATERIAL STUDIO

MATERIAL : POLYMER LAMINATE



SIZE : 120MM X 8FT
THICKNESS : 15MM

1989

THICKNESS : 1.5MM
SIZE : 10 ' X 4' / 8' X 4'

4519

COLLECTION



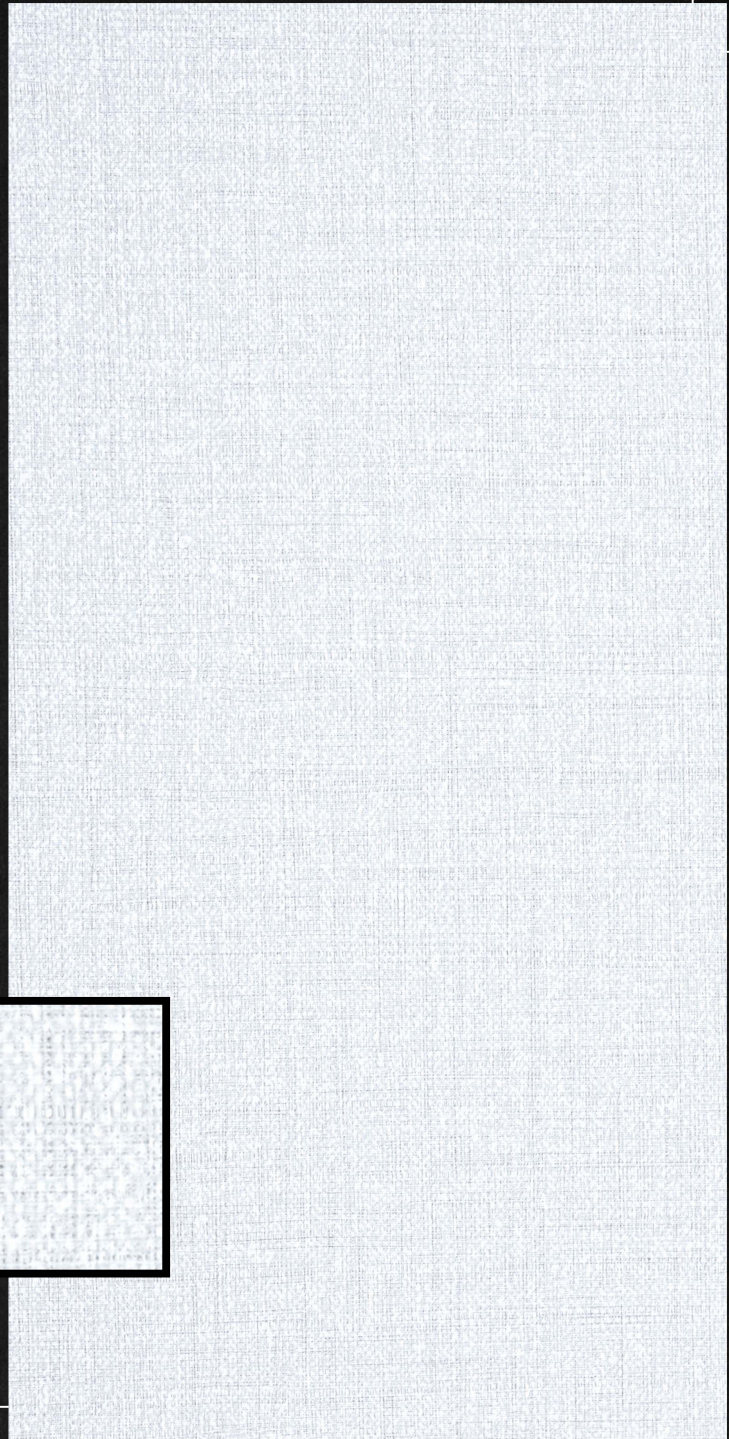
LOUVERS



SIZE : 120MM X 8FT
THICKNESS : 15MM

1990

MATERIAL : POLYMER LAMINATE



THICKNESS : 1.5MM
SIZE : 10 ' X 4' / 8' X 4'

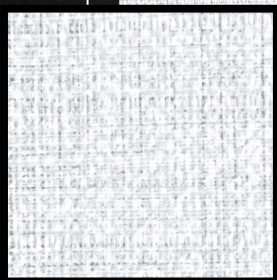
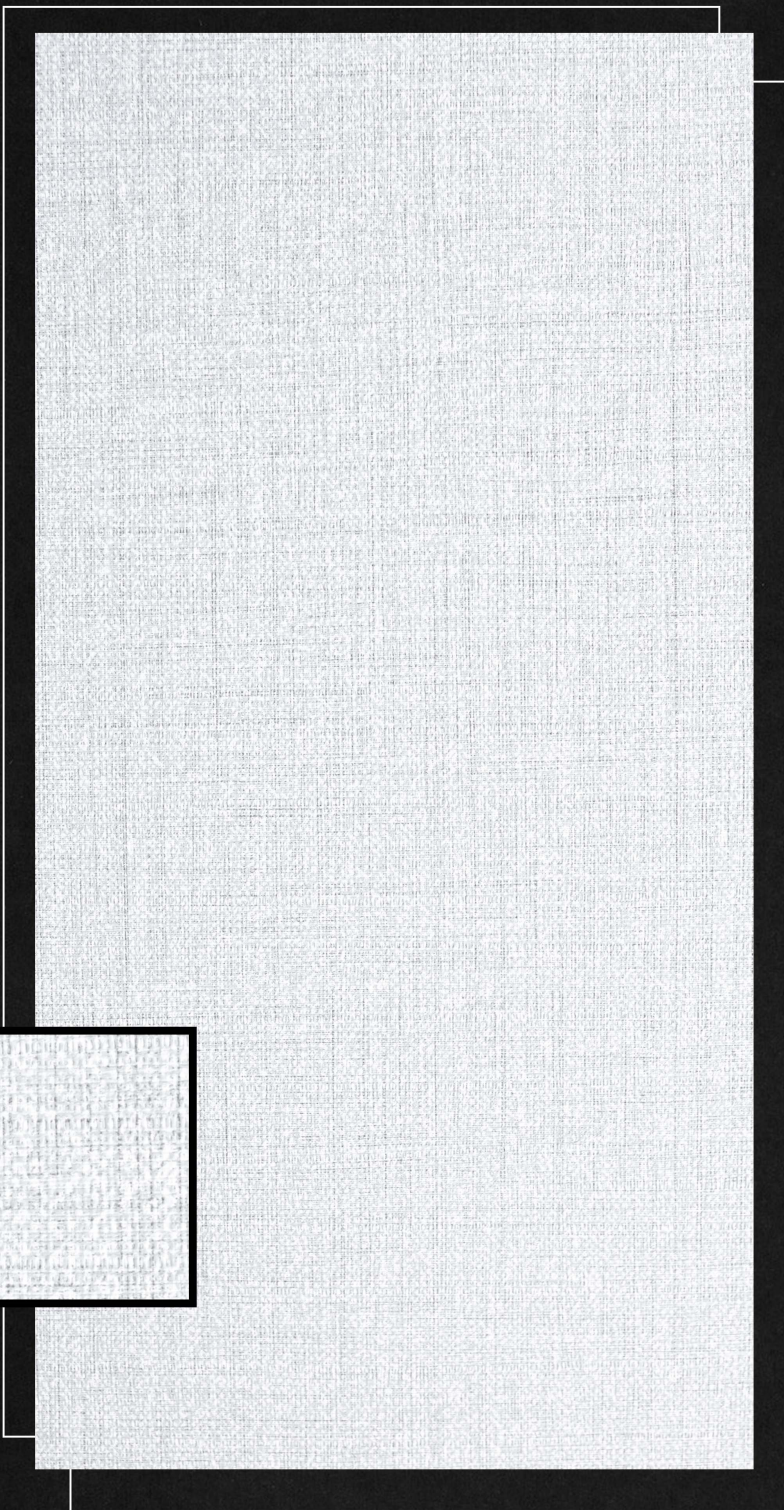
4520

POLYMER



LAMINATE

MATERIAL : POLYMER LAMINATE



SIZE : 120MM X 8FT
THICKNESS : 15MM

1991

THICKNESS : 1.5MM
SIZE : 10 ' X 4' / 8' X 4'

4521

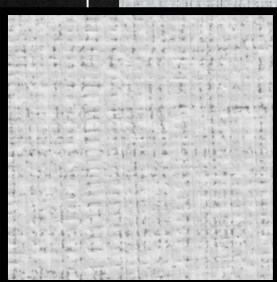
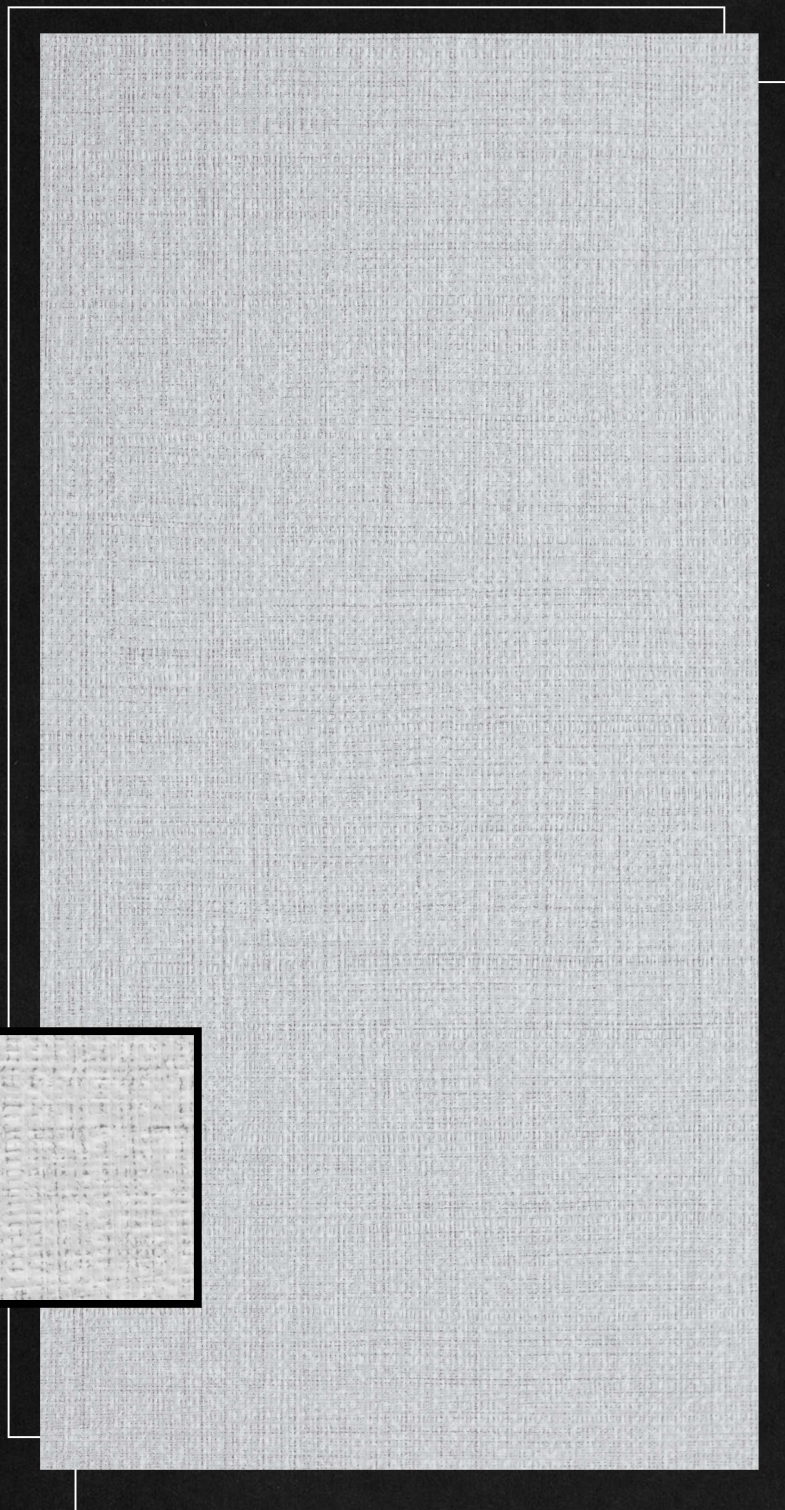
POLYMER

SIANNA

CLUB

MATERIAL STUDIO

MATERIAL : POLYMER LAMINATE



SIZE : 120MM X 8FT
THICKNESS : 15MM

1992

THICKNESS : 1.5MM
SIZE : 10 ' X 4' / 8' X 4'

4522

LAMINATE